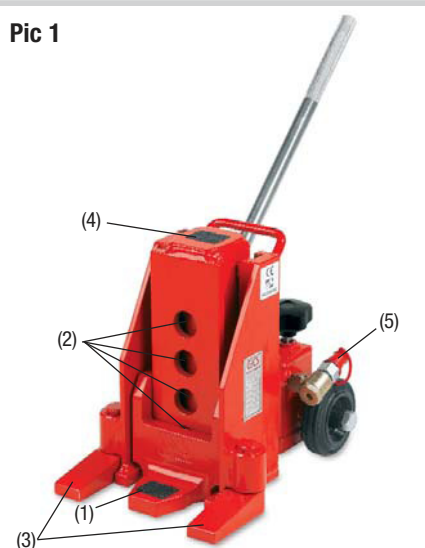


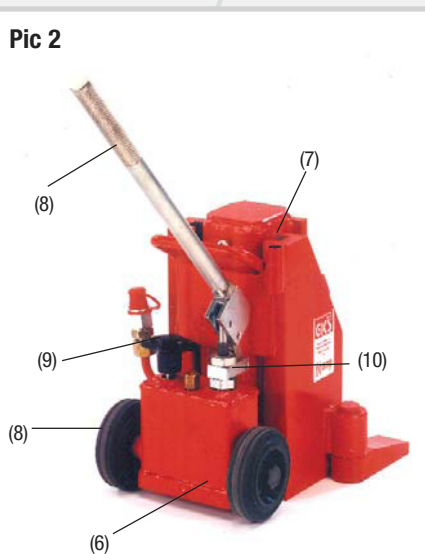
GKS-PERFEKT

Hydraulic jacks

Pic 1



Pic 2



Pic 3



GKS-Perfekt lifting equipment meets the highest quality standards

Our lifting equipment complies with the most stringent of requirements. In the choice of both materials and manufacturing.

For decades our equipment has proved to be exceptionally robust and has a long service life.

Independent operation without any power source, combined with maximum safety for the operator and the heavy load is guaranteed.

The customer receives a practical device for multi-purpose applications at any given site, be it in the company, shop floor, off-site, remote areas or in the assembly line.

The difference is in the details:

- **Integrated parts are all made of stainless material.**
- **The use of high-grade material combines an increased load capacity with a significant reduction of the dead weight of the jacks.**
- **Test mark BGV D8 (Germany) ANSI/ASME (USA)**
- **A waste-wax cast toe with a very high safety margin, a minimum toe height of 0.6" (V5) and an anti-slip pad on the load surface to prevent from slipping. A peg on the back secures correct insertion and thus prevents from accidents. (1)**
- **The toe hook can be height-adjusted according to the lifting point. This is a time and money saving feature for the user: with a minimum of strokes the load is up and our dollies are underneath (2)**
- **Swivel feet** allowing to position the jack as close as possible towards the load (access in close quarters) and preventing from tipping and slipping. (3)
- **The full load capacity on the top plate. (4)**
- **A coupling adaptor** for remote operation of two or more jacks with a pump. (5)
- **A safety valve** to prevent from overloading (not visible). (6)
- **Precision guideways** on the housing and slider for precise lifting action and long life. (7)
- **Wheels and a telescopic handle** for easy rolling (no more back injuries). (8/Pic 3)
- **A lowering screw** for precise and sensitive lowering of the load. (9)
- **A 180° rotatable pump handle**, allowing operation in tight corners. (10)

GKS-PERFEKT V5 + V10

for heavy loads up to
22,000 lbs. / 10 t

technical data	V 5	V 10
item number	10181	10182
full load capacity	11,000 lbs. 50 kN (5 t)	22,000 lbs. 100 kN (10 t)
working pressure	7,542 psi 520 bar	7,542 psi 520 bar
minimum loading height with waste-wax cast toe	0.6" 15 mm	0.8" 20 mm
lifting height	5.5" 140 mm	6.3" 160 mm
max. loading height using waste-wax cast toe at max. adjustment	5.7" 145 mm	6.9" 175 mm
no. of different height positions of toe	3 x	4 x
size of top plate	2.7 x 2.4" 68 x 60 mm	3.2 x 2.8" 80 x 72 mm
loading height with top plate	10" 255 mm	12.2" 310 mm
overall dimensions (L x W x H)	10.2 x 8.3 x 10" 260 x 210 x 255 mm	12.6 x 9.4 x 12.2" 320 x 240 x 310 mm
tare weight incl. oil fill	46 lbs. 21 kg	71 lbs. 32 kg

Our V jacks are equipped with our improved waste-wax cast toe for single-hand control.

As a result, e.g. our 5 t jack has an extremely low toe height of 0.6" only.

The material guarantees a maximum safety in durability and against breakage.

No warping, even if used for years.

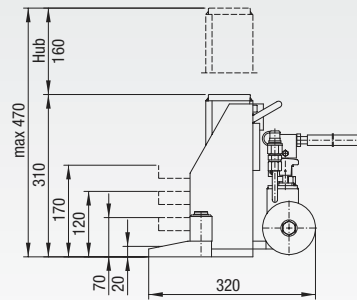
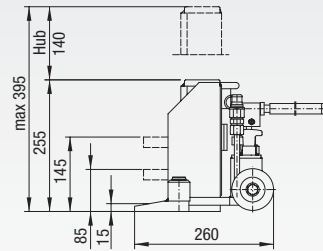
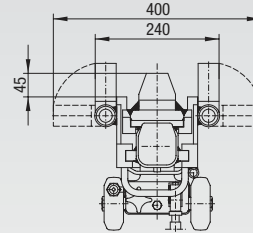
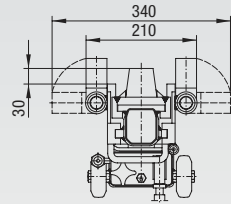
Anti-slip pads on the top plate and on the toe hook avoid slipping.

On our cast toe we grant a warranty of 3 years!



for heavy loads up to
22,000 lbs. / 10 t

GKS-PERFEKT V5 + V10



Model V5

Model V10



Model V5



Model V10

All jacks can be nickel plated
for an additional price.

GKS-PERFEKT V15 + V20

for heavy loads up to
44,000 lbs. / 20 t

technical data	V 15	V 20
item number	10183	10184
full load capacity	33,000 lbs. 150 kN (15 t)	44,000 lbs. 200 kN (20 t)
working pressure	7,542 psi 520 bar	7,542 psi 520 bar
minimum loading height with waste-wax cast toe	1" 25 mm	1.2" 30 mm
lifting height	6.3" 160 mm	6.3" 160 mm
max. loading height using waste-wax cast toe at max. adjustment	6.9" 175 mm	6.7" 170 mm
no. of different height positions of toe	4 x	3 x
size of top plate	3.7 x 3.5" 95 x 88 mm	4.7 x 4.3" 120 x 110 mm
loading height with top plate	12.2" 310 mm	12.8" 325 mm
overall dimensions (L x W x H)	13.9 x 10.9 x 12.2" 353 x 278 x 310 mm	17.9 x 12.6 x 12.8" 455 x 320 x 325 mm
tare weight incl. oil fill	117 lbs. 53 kg	159 lbs. 72 kg

Our V jacks are equipped with our improved waste-wax cast toe for single-hand control.

As a result, e. g. our 5 t jack has an extremely low toe height of 0.6" only.

The material guarantees a maximum safety in durability and against breakage.

No warping, even if used for years.

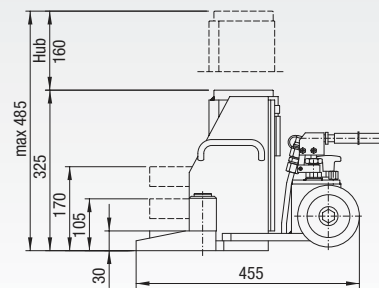
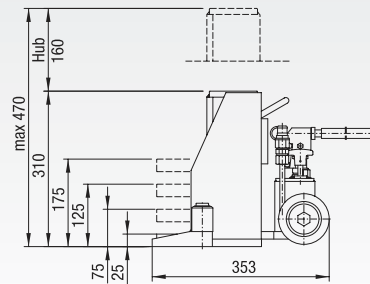
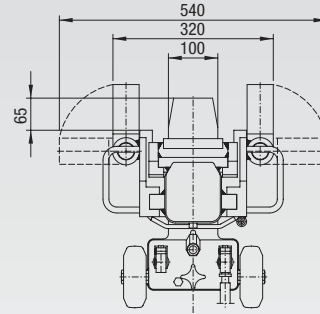
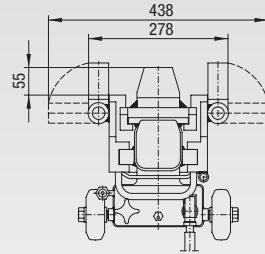
Anti-slip pads on the top plate and on the toe hook avoid slipping.

On our cast toe we grant a warranty of 3 years!



for heavy loads up to
44,000 lbs. / 20 t

GKS-PERFEKT V15 + V20



Model V15

Model V20



Model V15

All jacks can be nickel plated
for an additional price.



Model V20