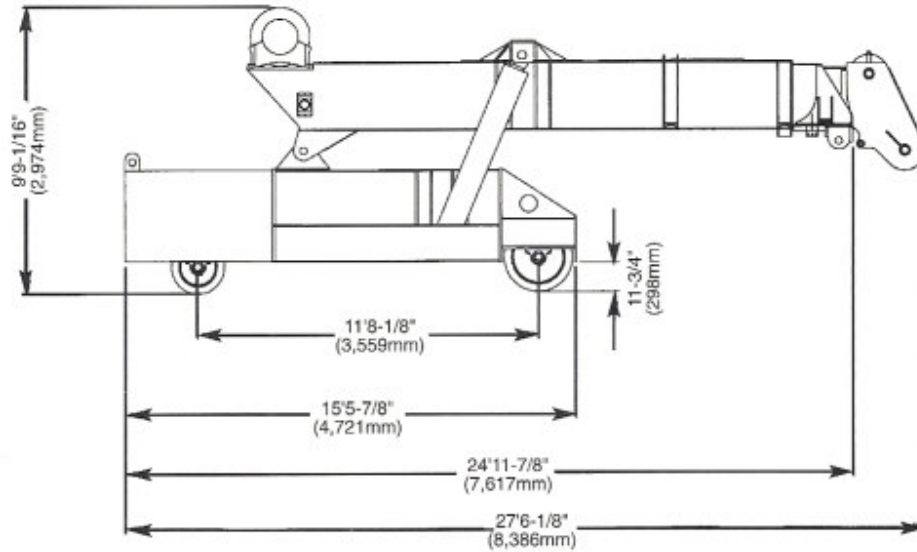
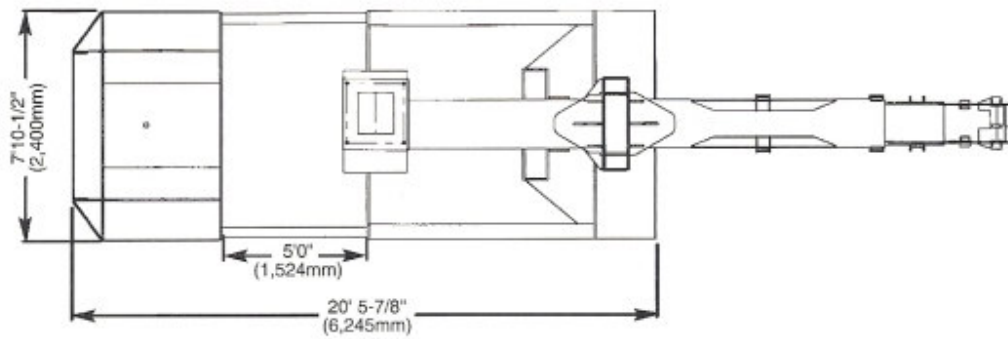




I
N
N
O
V
A
T
I
O
N
S

IN LIFTING





BOOM LENGTH IS FROM PIVOT POINT TO CENTER OF SHEAVES.

44'8" (13,614mm) POWER/MANUAL SECTIONS EXTENDED.

38'8" (11,785mm) POWER SECTION FULLY EXTENDED/MANUAL SECTION EXTENDED HALF WAY.

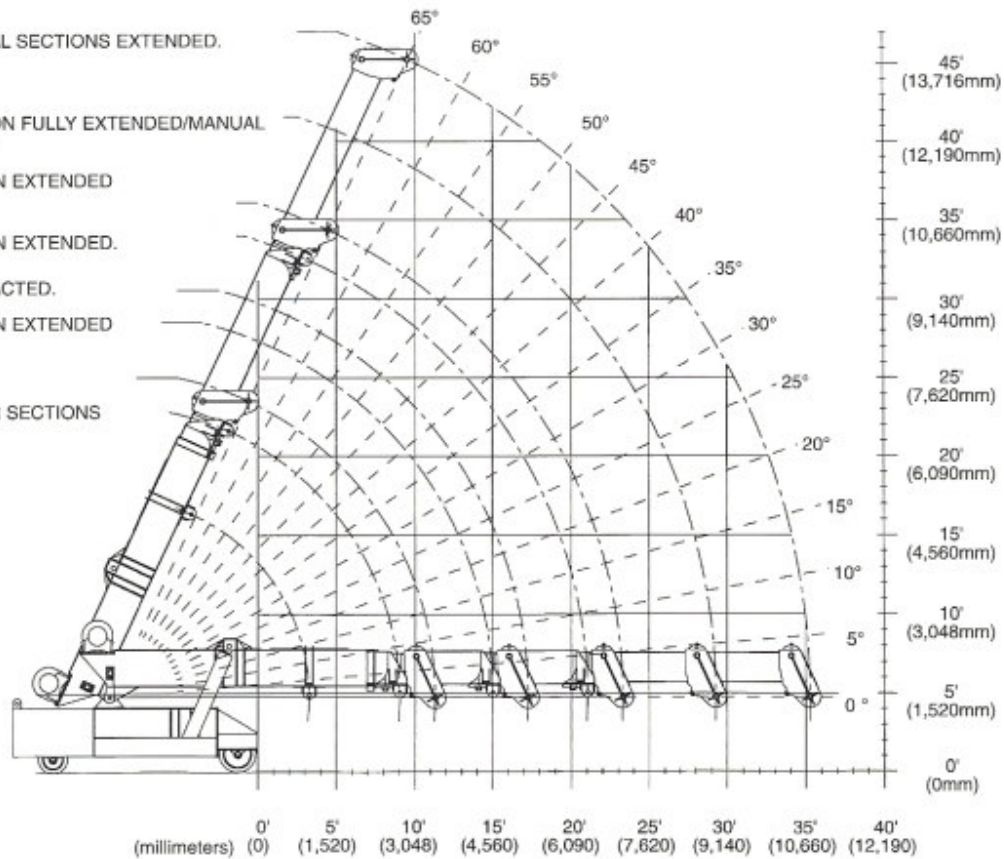
32'3" (9,829mm) POWER SECTION EXTENDED PICK FROM HOOK.

30'5" (9,271mm) POWER SECTION EXTENDED.

MANUAL SECTION FULLY RETRACTED.

24'5" (7,442mm) POWER SECTION EXTENDED HALF WAY.

20'8" (6,299mm) MANUAL/POWER SECTIONS RETRACTED.



LOAD CHARTS IN U.S. TONS

LOAD RADIUS IN FEET	75 TON MOBILIFT LOAD CHART										MLLC106 011701
	FOR USE WITH HOOK BLOCK ONLY STANDARD NON-REMOVABLE "A" COUNTERWEIGHT										
	FROM FRONT		COUNTERWEIGHT FULLY EXTENDED BOOM LENGTH (FEET)					COUNTERWEIGHT FULLY RETRACTED BOOM LENGTH (FEET)			
		20	32	44		20	32	44			
0	63	100,000				63	100,000				
1	60	100,000				60	100,000				
2	57	95,400				57	78,800				
3	54	75,300				54	59,400				
4	50	60,200				50	47,400				
5	46	50,000				46	39,200	64	38,400		
6	42	42,500				42	33,200	62	32,500		
7	38	36,900				38	28,700	60	28,000		
8	33	32,400				33	25,100	58	24,500		
9	28	28,900				28	22,300	56	21,600		
10	21	25,900				21	19,900	54	19,300	64	
11	10	23,500				10	17,800	52	17,400	63	
12								49	15,700	62	
13	SEE NOTE "E" BELOW					SEE NOTE "E" BELOW		47	14,300	60	
14								45	13,000	59	
15								42	12,000	57	
16								39	11,000	56	
17								36	10,100	54	
18								33	9,400	52	
19								30	8,700	51	
20								26	8,000	49	
21								22	7,500	47	
22								16	7,000	46	
23								8	6,500	44	
24										42	
25										40	
26										38	
27										36	
28										33	
29										31	
30										28	
31										26	
32										22	
33										19	
34										14	
35										7	

NOTES:

A) FLY SECTION CAPACITIES ARE LIMITED BY ANGLE. DO NOT USE LOAD RADIUS WHEN USING FLY SECTION.

B) RATINGS ABOVE THE BOLD LINE ARE BASED ON THE MACHINE'S HYDRAULIC OR STRUCTURAL STRENGTH AND NOT STABILITY.

C) RATINGS BELOW THE BOLD LINE ARE BASED ON 85% OF TIPPING.

D) ALL CAPACITIES ARE IN POUNDS.

E) TELESCOPE CYLINDER MUST BE FULLY RETRACTED AND AGAINST STOPS.

WARNING

THE RATED LOADS ARE DETERMINED BY BOOM ANGLE ONLY FOR BOOM LENGTHS LESS THAN 44' WITH FLY SECTION EXTENDED IN THE COLUMN HEADED BY 44'

USE RATING OF NEXT LOWER BOOM ANGLE FOR BOOM ANGLES NOT SHOWN.

MANUAL FLY SECTION SEE NOTES

LOADED BOOM ANGLE

MANUAL FLY SECTION SEE NOTES

LOADED BOOM ANGLE

LOAD RADIUS IN FEET	75 TON MOBILIFT LOAD CHART										MLLC106 011701
	FOR USE WITH HOOK BLOCK ONLY STANDARD NON-REMOVABLE "A" COUNTERWEIGHT WITH "B" COUNTERWEIGHT ADDED										
	FROM FRONT		COUNTERWEIGHT FULLY EXTENDED BOOM LENGTH (FEET)					COUNTERWEIGHT FULLY RETRACTED BOOM LENGTH (FEET)			
		20	32	44		20	32	44			
0	63	100,000				63	100,000				
1	60	100,000				60	100,000				
2	57	100,000				57	100,000				
3	54	100,000				54	92,400				
4	50	98,400				50	74,100				
5	46	82,100				46	61,700	64	60,900		
6	42	70,200				42	52,600	62	51,900		
7	38	61,200				38	45,800	60	45,100		
8	33	54,200				33	40,400	58	39,700		
9	28	48,500				28	36,000	56	35,400		
10	21	43,800				21	32,400	54	31,900	64	
11	10	39,900				10	29,400	52	28,900	63	
12								49	26,400	62	
13	SEE NOTE "E" BELOW					SEE NOTE "E" BELOW		47	24,200	60	
14								45	22,300	59	
15								42	20,600	57	
16								39	19,200	56	
17								36	17,900	54	
18								33	16,700	52	
19								30	15,700	51	
20								26	14,700	49	
21								22	13,800	47	
22								16	13,000	46	
23								8	12,300	44	
24										42	
25										40	
26										38	
27										36	
28										33	
29										31	
30										28	
31										26	
32										22	
33										19	
34										14	
35										7	

NOTES:

A) FLY SECTION CAPACITIES ARE LIMITED BY ANGLE. DO NOT USE LOAD RADIUS WHEN USING FLY SECTION.

B) RATINGS ABOVE THE BOLD LINE ARE BASED ON THE MACHINE'S HYDRAULIC OR STRUCTURAL STRENGTH AND NOT STABILITY.

C) RATINGS BELOW THE BOLD LINE ARE BASED ON 85% OF TIPPING.

D) ALL CAPACITIES ARE IN POUNDS.

E) TELESCOPE CYLINDER MUST BE FULLY RETRACTED AND AGAINST STOPS.

WARNING

THE RATED LOADS ARE DETERMINED BY BOOM ANGLE ONLY FOR BOOM LENGTHS LESS THAN 44' WITH FLY SECTION EXTENDED IN THE COLUMN HEADED BY 44'

USE RATING OF NEXT LOWER BOOM ANGLE FOR BOOM ANGLES NOT SHOWN.

MANUAL FLY SECTION SEE NOTES

LOADED BOOM ANGLE

MANUAL FLY SECTION SEE NOTES

LOADED BOOM ANGLE

LOAD CHARTS IN U.S. TONS

LOAD RADIUS IN FEET FROM FRONT	75 TON MOBILIFT LOAD CHART FOR USE WITH HOOK BLOCK ONLY STANDARD NON-REMOVABLE "A" COUNTERWEIGHT WITH "B,C" COUNTERWEIGHTS ADDED										MLLC107 011701		
		COUNTERWEIGHT FULLY EXTENDED BOOM LENGTH (FEET)						COUNTERWEIGHT FULLY RETRACTED BOOM LENGTH (FEET)					
		20	32	44		20		32	44				
0	63	100,000				63	100,000						
1	60	100,000				60	100,000						
2	57	100,000				57	100,000						
3	54	100,000				54	100,000						
4	50	100,000				50	94,200						
5	46	100,000	64	94,000	LOADED BOOM ANGLE △°	46	78,600	64	77,800	LOADED BOOM ANGLE △°			
6	42	89,700	62	89,000		42	67,200	62	66,500				
7	38	78,400	60	77,700		38	58,600	60	57,900				
8	33	69,500	58	68,800		33	51,800	58	51,100				
9	28	62,300	56	61,700		28	46,300	56	45,700				
10	21	56,400	54	55,800	64	57,000	54	41,300	84	42,400			
11	10	51,500	52	50,900	63	52,000	52	37,500	83	38,600			
12	SEE NOTE "E" BELOW		49	46,700	62	47,800	SEE NOTE "E" BELOW	49	34,400	62	35,400		
13			47	43,100	60	44,200			47	31,600	60	32,700	
14			45	40,000	59	41,000			45	29,200	59	30,300	
15			42	37,300	57	38,200			42	27,200	57	28,200	
16			39	34,800	56	35,800			39	25,300	56	26,300	
17			36	32,700	54	33,600		CAUTION! DO NOT EXTEND OR RETRACT COUNTERWEIGHT WITH ANY LOAD SUSPENDED ON HOOK OR FORKS!	36	23,700	54	24,600	
18			33	30,700	52	31,700				33	22,200	52	23,200
19			30	29,000	51	29,900				30	20,900	51	21,800
20			26	27,400	49	28,300				26	19,700	49	20,600
21			22	26,000	47	26,900				22	18,600	47	19,500
22		16	24,700	46	25,600		16		17,600	46	18,500		
23		8	23,400	44	24,300		8		16,700	44	17,600		
24				42	23,200					42	16,700		
25				40	22,200					40	15,900		
26				38	21,200					38	15,200		
27				36	20,300				36	14,500			
28				33	19,500				33	13,900			
29				31	18,700				31	13,300			
30				28	18,000				28	12,700			
31				26	17,300				26	12,200			
32				22	16,700				22	11,700			
33				19	16,100				19	11,300			
34				14	15,500				14	10,800			
35				7	15,000				7	10,400			

NOTES:

A) FLY SECTION CAPACITIES ARE LIMITED BY ANGLE. DO NOT USE LOAD RADIUS WHEN USING FLY SECTION.

B) RATINGS ABOVE THE BOLD LINE ARE BASED ON THE MACHINE'S HYDRAULIC OR STRUCTURAL STRENGTH AND NOT STABILITY.

C) RATINGS BELOW THE BOLD LINE ARE BASED ON 85% OF TIPPING.

D) ALL CAPACITIES ARE IN POUNDS.

E) TELESCOPE CYLINDER MUST BE FULLY RETRACTED AND AGAINST STOPS.

WARNING

THE RATED LOADS ARE DETERMINED BY BOOM ANGLE ONLY FOR BOOM LENGTHS LESS THAN 44' WITH FLY SECTION EXTENDED IN THE COLUMN HEADED BY 44'

USE RATING OF NEXT LOWER BOOM ANGLE FOR BOOM ANGLES NOT SHOWN.

LOAD RADIUS IN FEET FROM FRONT	75 TON MOBILIFT LOAD CHART FOR USE WITH HOOK BLOCK ONLY STANDARD NON-REMOVABLE "A" COUNTERWEIGHT WITH "B,C, D" COUNTERWEIGHTS ADDED										MLLC108 011701		
		COUNTERWEIGHT FULLY EXTENDED BOOM LENGTH (FEET)						COUNTERWEIGHT FULLY RETRACTED BOOM LENGTH (FEET)					
		20	32	44		20		32	44				
0	63	100,000				63	100,000						
1	60	100,000				60	100,000						
2	57	100,000				57	100,000						
3	54	100,000				54	100,000						
4	50	100,000				50	100,000						
5	46	100,000	64	94,000	LOADED BOOM ANGLE △°	46	95,500	64	94,000	LOADED BOOM ANGLE △°			
6	42	100,000	62	89,000		42	81,800	62	81,000				
7	38	95,300	60	84,000		38	71,400	60	70,700				
8	33	84,600	58	80,000		33	63,200	58	62,600				
9	28	76,000	56	75,400		28	56,700	56	56,100				
10	21	68,900	54	68,300	64	57,000	54	50,700	64	51,800			
11	10	62,900	52	62,300	63	55,000	52	46,200	63	47,300			
12	SEE NOTE "E" BELOW		49	57,300	62	52,000	SEE NOTE "E" BELOW	49	42,400	62	43,400		
13			47	53,000	60	51,000			47	39,100	60	40,100	
14			45	49,200	59	50,200			45	36,200	59	37,200	
15			42	45,900	57	46,900			42	33,700	57	34,700	
16			39	43,000	56	43,900		CAUTION! DO NOT EXTEND OR RETRACT COUNTERWEIGHT WITH ANY LOAD SUSPENDED ON HOOK OR FORKS!	39	31,500	56	32,400	
17			36	40,400	54	41,300				36	29,500	54	30,500
18			33	38,000	52	39,000				33	27,700	52	28,700
19			30	35,900	51	36,800				30	26,100	51	27,100
20			26	34,000	49	34,900				26	24,700	49	25,600
21			22	32,300	47	33,200				22	23,400	47	24,300
22		16	30,700	46	31,600		16		22,200	46	23,100		
23		8	29,200	44	30,100		8		21,100	44	21,900		
24				42	28,800					42	20,900		
25				40	27,500					40	20,000		
26				38	26,400				38	19,100			
27				36	25,300				36	18,300			
28				33	24,300				33	17,500			
29				31	23,400				31	16,800			
30				28	22,500				28	16,100			
31				26	21,700				26	15,500			
32				22	20,900				22	14,900			
33				19	20,200				19	14,400			
34				14	19,500				14	13,900			
35				7	18,800				7	13,400			

NOTES:

A) FLY SECTION CAPACITIES ARE LIMITED BY ANGLE. DO NOT USE LOAD RADIUS WHEN USING FLY SECTION.

B) RATINGS ABOVE THE BOLD LINE ARE BASED ON THE MACHINE'S HYDRAULIC OR STRUCTURAL STRENGTH AND NOT STABILITY.

C) RATINGS BELOW THE BOLD LINE ARE BASED ON 85% OF TIPPING.

D) ALL CAPACITIES ARE IN POUNDS.

E) TELESCOPE CYLINDER MUST BE FULLY RETRACTED AND AGAINST STOPS.

WARNING

THE RATED LOADS ARE DETERMINED BY BOOM ANGLE ONLY FOR BOOM LENGTHS LESS THAN 44' WITH FLY SECTION EXTENDED IN THE COLUMN HEADED BY 44'

USE RATING OF NEXT LOWER BOOM ANGLE FOR BOOM ANGLES NOT SHOWN.

75 TON MOBILIFT LOAD CHARTS

LOAD RADIUS IN FEET FROM FRONT	75 TON MOBILIFT LOAD CHART COUNTERWEIGHT RETRACTED FROM POWER BOOM LIFTING EYE ONLY			
	"A"	"AB"	"ABC"	"ABCD"
0	150,000	150,000	150,000	150,000
1	112,000	150,000	150,000	150,000
2	76,500	119,600	144,000	144,000
3	57,600	90,600	115,400	138,000
4	45,800	72,600	92,700	112,800
5	37,800	60,300	77,200	94,100
6	32,000	51,400	66,000	80,500
7	27,500	44,600	57,400	70,300
8	24,100	39,300	50,800	62,200
9	21,300	35,100	45,400	55,700

LOAD RADIUS IN FEET FROM FRONT	75 TON MOBILIFT LOAD CHART COUNTERWEIGHT EXTENDED FROM POWER BOOM LIFTING EYE ONLY			
	"A"	"AB"	"ABC"	"ABCD"
0	150,000	150,000	150,000	150,000
1	141,700	150,000	150,000	150,000
2	97,200	144,000	144,000	144,000
3	73,400	120,500	138,000	138,000
4	58,700	96,900	123,700	134,000
5	48,600	80,700	103,300	125,800
6	41,300	69,000	88,500	107,800
7	35,700	60,100	77,300	94,200
8	31,400	53,100	68,400	83,600
9	27,900	47,500	61,400	75,000

LOAD RADIUS IN FEET FROM FRONT	75 TON MOBILIFT LOAD CHART COUNTERWEIGHT RETRACTED FROM MAIN BOOM LIFTING EYE ONLY			
	"A"	"AB"	"ABC"	"ABCD"
0	150,000	150,000	150,000	150,000
1	102,400	150,000	150,000	150,000
2	69,200	112,200	144,500	150,000
3	51,500	84,500	109,300	134,100
3.25	47,900	78,900	102,100	125,300

LOAD RADIUS IN FEET FROM FRONT	75 TON MOBILIFT LOAD CHART COUNTERWEIGHT EXTENDED FROM MAIN BOOM LIFTING EYE ONLY			
	"A"	"AB"	"ABC"	"ABCD"
0	150,000	150,000	150,000	150,000
1	132,100	150,000	150,000	150,000
2	89,900	150,000	150,000	150,000
3	67,400	114,500	147,600	150,000
3.25	62,800	106,900	138,000	150,000

LOAD RADIUS IN METERS FROM FRONT	68 TONNE MOBILIFT LOAD CHART COUNTERWEIGHT RETRACTED FROM POWER BOOM LIFTING EYE ONLY			
	"A"	"AB"	"ABC"	"ABCD"
0	68,000	68,000	68,000	68,000
.3	50,800	68,000	68,000	68,000
.6	34,600	54,200	65,300	65,300
.9	26,100	41,000	52,300	62,500
1.2	20,700	32,900	42,000	51,100
1.5	17,100	27,300	35,000	42,600
1.8	14,500	23,300	29,900	36,500
2.1	12,400	20,200	26,000	31,800
2.4	10,900	17,800	23,000	28,200
2.7	9,600	15,900	20,500	25,200

LOAD RADIUS IN METERS FROM FRONT	68 TONNE MOBILIFT LOAD CHART COUNTERWEIGHT EXTENDED FROM POWER BOOM LIFTING EYE ONLY			
	"A"	"AB"	"ABC"	"ABCD"
0	68,000	68,000	68,000	68,000
.3	64,200	68,000	68,000	68,000
.6	44,000	65,300	65,300	65,300
.9	33,200	54,600	62,500	62,500
1.2	26,600	43,900	56,100	60,700
1.5	22,000	36,600	46,800	56,900
1.8	18,700	31,200	40,100	48,800
2.1	16,100	27,200	35,000	42,700
2.4	14,200	24,000	31,000	37,900
2.7	12,600	21,500	27,800	34,000

LOAD RADIUS IN METERS FROM FRONT	68 TONNE MOBILIFT LOAD CHART COUNTERWEIGHT RETRACTED FROM MAIN BOOM LIFTING EYE ONLY			
	"A"	"AB"	"ABC"	"ABCD"
0	68,000	68,000	68,000	68,000
.3	46,400	68,000	68,000	68,000
.6	31,300	50,800	65,500	68,000
.9	23,300	38,300	49,500	60,800
1.0	21,700	35,700	46,300	56,800

LOAD RADIUS IN METERS FROM FRONT	68 TONNE MOBILIFT LOAD CHART COUNTERWEIGHT EXTENDED FROM MAIN BOOM LIFTING EYE ONLY			
	"A"	"AB"	"ABC"	"ABCD"
0	68,000	68,000	68,000	68,000
.3	59,900	68,000	68,000	68,000
.6	40,700	68,000	68,000	68,000
.9	30,500	51,900	66,900	68,000
1.0	28,400	48,400	62,500	68,000

NOTE: The power section boom must be fully retracted. The ratings above the bold line are based on the machine's hydraulic or structural strength and not stability. Ratings below bold line are based on 85% of tipping. All capacities are in pounds or kilograms.
CAUTION!
 Do not extend or retract counterweight with any load suspended on hook or forks.



MOBILIFT 75 (68) Ton

STANDARD EQUIPMENT:

ENGINE:

4 cylinder turbo charged, 116 h.p. diesel engine.

PUMP:

Load sense pump, 80 g.p.m.

CONTROLS:

Separate controls for each function. Combination of joy stick and foot controls allow machine to perform multiple functions at the same time.

DRIVE:

Full hydrostatic system with integral spring applied brakes. 30 g.p.m. closed loop pump.

GRADEABILITY:

3.5% with full load. 17% with no load. NOTE: Gradeability will vary with optional counterweights and engine options.

WHEELS:

Four (4) 28" (711mm) diameter, 14" (356mm) wide front wheels. Two (2) 22" (559mm) diameter, 12" (305mm) wide rear wheels. Full capacity wheels with heavy duty anti-friction bearings. Replaceable polyurethane tires.

HYDRAULIC RESERVOIR:

200 gallon (757L) with sump and suction strainers.

STEER:

Planetary gear steer for 90° steer of rear wheels. Allows rotation of machine to move boom and load in a sideways direction. Steer indicator shows position of rear wheels. Rear wheel drive allows 360° rotation of the machine.

OSCILLATING REAR STEERBOX:

Keeps all steering wheels in contact with the ground.

TELESCOPING COUNTERWEIGHT:

Standard counterweight section telescopes 5' (1,524mm) using two (2) hydraulic cylinders. Machine has lift chart for both retracted and extended counterweight positions.

BOOM:

High strength three section 18' - 44' (5,486 - 13,411mm) telescoping boom with power first section and manually extended second section. Replaceable wear pads on all sliding sections.

BOOM LIFT CYLINDERS:

Twin cylinders capable of booming full load. Safety holding valves on both cylinders. Spherical bushings for constant cylinder alignment with boom.

TELESCOPIC CYLINDER:

Large telescope cylinder. Capable of telescoping full load. Integral safety holding valves.

WINCH:

Two speed high performance hydraulic winch. Integral, full capacity load brake. Wide, low profile drum. High capacity 580' (1,768mm), 5/8" (16mm), type N wire rope.

TIE DOWN EYES:

Tie down eyes on all corners for hauling or lifting the machine.

DRIVER PROTECTION GUARD:

Safety feature. Structural overhead guard for driver protection.

OTHER STANDARD FEATURES:

Back up alarm. Horn. Adjustable seat with integral electrical switch to set brakes when driver leaves seat.

WEIGHT:

Standard "A" counterweight included.
*A.S.W.: 46,800 lbs.(21,228kg).

OPTIONAL EQUIPMENT:

50 (45) TON BLOCK:

Low profile block. *A.S.W.: 1,100 lbs (49kg)

SPREADER BEAMS:

Low profile. Adjustable lifting points. Made to length to suit customer requirements.

ENGINE:

Gas and propane options.

COUNTERWEIGHTS: (See load charts)

"B" is optional. 14,500 lbs (6,577 kg)

"C" is optional. 8,500 lbs (3,855 kg)

"D" is optional. 8,050 lbs (3,651 kg)

MAIN BOOM LIFTING EYE:

75 (68) ton. *A.S.W.: 150 lbs. (68kg)

LOAD INDICATOR:

Cable mounted hook block load indicator. Anti-two block device installed to prevent damage to wire rope when extending boom sections. *A.S.W.: 50 lbs.(23kg)

EXHAUST PURIFIER:

Reduces carbon monoxide, hydrocarbons and volatile organic fraction of diesel particulate matter.

*A.S.W.: 15 lbs. (7kg)

*A.S.W. denotes approximate shipping weight

©Lift Systems 2001

Note: Specifications are provided in U.S. and (metric) millimeters. All equipment dimensions, designs, specifications, calculations, etc., as described above, are subject to change at manufacturer's discretion at any time without notice. Weights are approximate and may vary. Data herein is for informational purposes only and will not be construed to guarantee suitability of the equipment for any particular purpose as performance may vary with conditions encountered. Warranty will apply as written in standard contract form upon purchase of equipment.

Designed and tested to comply with ANSI Code B56.7. Capacities are for reference only and must not be used for any serial numbered machine or Lift System. Laminated serial numbered load charts may be obtained from Lift Systems.

4 POINT LIFT SYSTEMS AND ASSOCIATED LOGO ARE CLAIMED AS A TRADEMARK BY LIFT SYSTEMS. *PATENTS IN APPLICATION.



LIFT SYSTEMS

216 40TH ST (61265) • P O BOX 906

MOLINE IL 61266-0906

TEL +1(309)764-9842 • FAX +1(309)764-9848

Web: www.lift-systems.com • Email: liftit@lift-systems.com

INTERNATIONAL OFFICES: UNITED KINGDOM • GERMANY • JAPAN • CANADA



Code MBL022001