

# MODEL MBL030

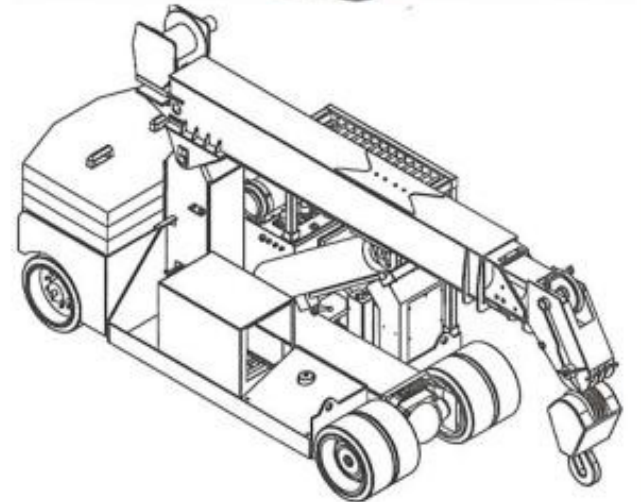
By Lift Systems, Inc.

## The 30 Ton Capacity Mobilift

### CAPACITY at a glance

| Ft/M From Front | Capacity in Tons * |
|-----------------|--------------------|
| 6(1.8)          | 30(27.3)           |
| 10(3.0)         | 21.4(19.5)         |
| 15(4.6)         | 14.4(13)           |
| 20(6.1)         | 10.7(9.7)          |
| 25(7.6)         | 8.4(7.6)           |
| 30(9.1)         | 6.8(6.2)           |
| 36.8(11.2)      | 5.3(4.8)           |

\* - Maximum capacities are shown with the counterweight fully extended. Optional Jib/Stinger and two part line are req'd for highlighted areas.

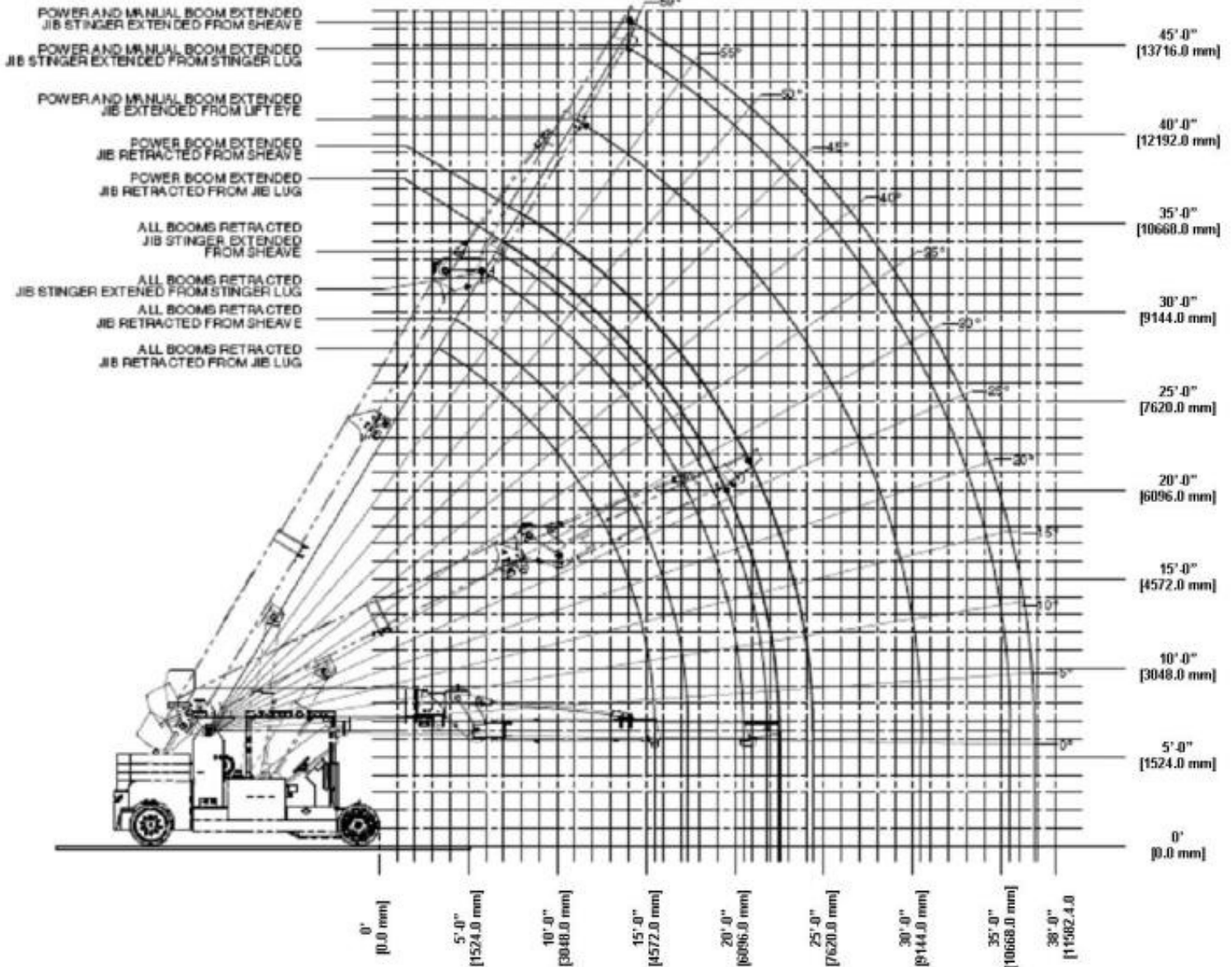
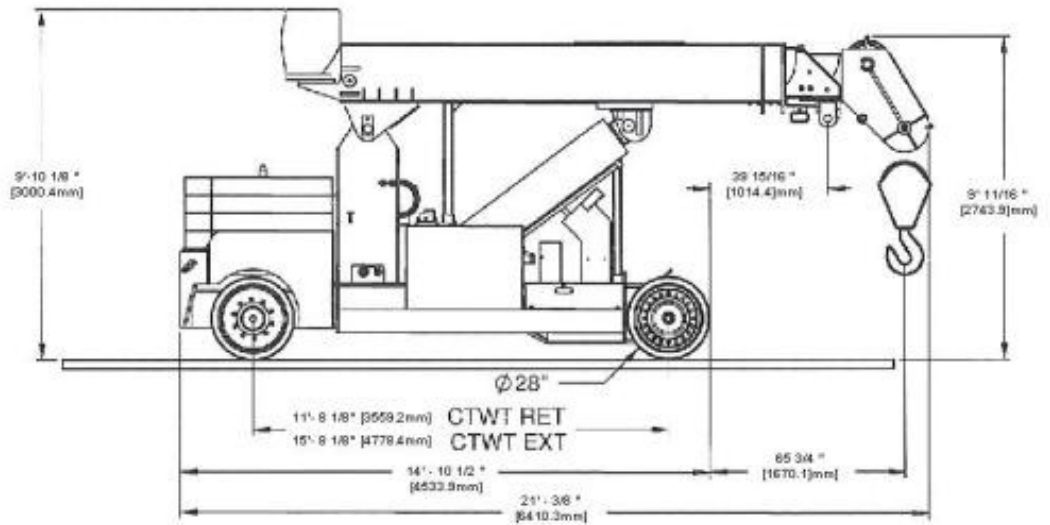
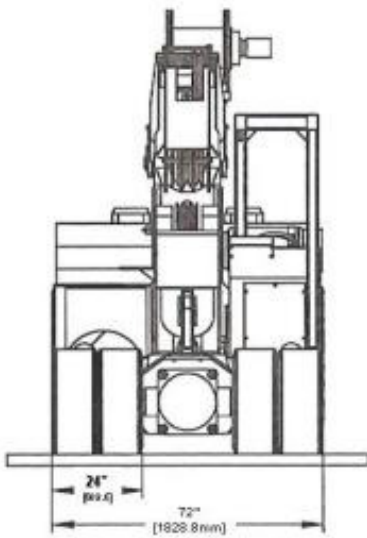


### STANDARD FEATURES

- Propane Powered 3.0L, 4 cyl. Engine
- Two Speed Manual Shift Transmission.  
Low Gear Speed .75 m.p.h. (1.20 kph),  
High Gear Speed 2.75 m.p.h. (4.42 kph)
- High Strength Two Section Boom
- Back Up Alarm, Horn, Adjustable Seat  
With Integral Electrical Power Shutoff  
Switch

### OPTIONAL FEATURES

- Dual Fuel, Gas, or Diesel Engine
- Hook Block
- Anti-Two Block Device
- Front Mounted Tool Tray
- CARL - Computer Assisted Remote  
Lifting. Provides Overload/Stability  
Protection.
- 10 Ton Jib/Stinger



# LIFT SYSTEMS, INC.

216 40th Street (61265) - PO Box 906 - Moline, IL 61266-0906  
 TEL +1-309-764-9842 FAX +1-309-764-9848  
 EMAIL: [liftit@lift-systems.com](mailto:liftit@lift-systems.com) WEB: [www.lift-systems.com](http://www.lift-systems.com)

**30 TON MOBILIFT LOAD CHART**  
FOR USE WITH HOOK BLOCK ONLY  
STANDARD NON-REMOVABLE "A" COUNTERWEIGHT  
PLUS 4 COUNTERWEIGHT PLATES

| LOAD RADIUS (FEET FROM FRONT) | FULLY EXTENDED     |        |                    |                       | FULLY RETRACTED    |           |                    |                       |
|-------------------------------|--------------------|--------|--------------------|-----------------------|--------------------|-----------|--------------------|-----------------------|
|                               | BOOM LENGTH (FEET) |        | MANUAL FLY SECTION | LOAD RATED BOOM ANGLE | BOOM LENGTH (FEET) |           | MANUAL FLY SECTION | LOAD RATED BOOM ANGLE |
|                               | 15                 | 22     |                    |                       | 15                 | 22        |                    |                       |
| 0                             | 50                 | 60,000 | 30                 | 50                    | 60,000             | 30        | 50                 |                       |
| 1                             | 45                 | 60,000 | SEE NOTES          | 45                    | 60,000             | SEE NOTES | 45                 |                       |
| 2                             | 39                 | 60,000 | SEE NOTES          | 39                    | 60,000             | SEE NOTES | 39                 |                       |
| 3                             | 33                 | 60,000 | SEE NOTES          | 33                    | 60,000             | SEE NOTES | 33                 |                       |
| 4                             | 25                 | 60,000 | SEE NOTES          | 25                    | 60,000             | SEE NOTES | 25                 |                       |
| 5                             | 14                 | 60,000 | SEE NOTES          | 14                    | 60,000             | SEE NOTES | 14                 |                       |
| 6                             |                    |        | 45                 | 45                    | 51,700             | 59        | 45                 |                       |
| 7                             |                    |        | 41                 | 41                    | 45,000             | 56        | 41                 |                       |
| 8                             |                    |        | 37                 | 37                    | 39,700             | 54        | 37                 |                       |
| 9                             |                    |        | 32                 | 32                    | 35,500             | 52        | 32                 |                       |
| 10                            |                    |        | 27                 | 27                    | 32,000             | 49        | 27                 |                       |
| 11                            |                    |        | 21                 | 21                    | 29,200             | 47        | 21                 |                       |
| 12                            |                    |        | 18                 | 12                    | 26,700             | 44        | 12                 |                       |
| 13                            |                    |        | 41                 |                       |                    | 41        |                    |                       |
| 14                            |                    |        | 38                 |                       |                    | 38        |                    |                       |
| 15                            |                    |        | 35                 |                       |                    | 35        |                    |                       |
| 16                            |                    |        | 32                 |                       |                    | 32        |                    |                       |
| 17                            |                    |        | 28                 |                       |                    | 28        |                    |                       |
| 18                            |                    |        | 23                 |                       |                    | 23        |                    |                       |
| 19                            |                    |        | 18                 |                       |                    | 18        |                    |                       |
| 20                            |                    |        | 10                 |                       |                    | 10        |                    |                       |

NOTES:  
A) FLY SECTION CAPACITIES ARE LIMITED BY ANGLE. DO NOT USE LOAD RADIUS WHEN USING FLY SECTION.  
B) RATINGS ABOVE THE BOLD LINE ARE BASED ON THE MACHINE'S HYDRAULIC OR STRUCTURAL STRENGTH AND NOT STABILITY.  
C) RATINGS BELOW THE BOLD LINE ARE BASED ON 85% OF TIPPING.  
D) ALL CAPACITIES ARE IN POUNDS.  
E) TELESCOPE CYLINDER MUST BE FULLY RETRACTED AND AGAINST STOPS.

WARNING:  
FOR BOOM LENGTHS LESS THAN 30' WITH FLY SECTION EXTENDED, THE RATED LOADS ARE DETERMINED BY BOOM ANGLE ONLY, IN THE COLUMN HEADED BY 30' BOOM. FOR BOOM ANGLES NOT SHOWN USE RATINGS OF THE NEXT LOWER BOOM ANGLE.  
**CAUTION!**  
DO NOT EXTEND OR RETRACT COUNTERWEIGHT WITH ANY LOAD SUSPENDED ON HOOK OR FORKS.